

Remember...

As a Resident or Business Operator

- **What we do on land affects the quality of water** we drink and use in so many ways.
- **Many small sources of pollution add up** to cause big water quality problems.
- **Pressure washing or hosing down sidewalks or driveways contribute to water pollution.** Mop, sweep or use other dry methods to clean pavement or grounds around your home or business.
- **Excessive runoff from landscape irrigation** can result in water pollution by carrying fertilizers, pesticides or silt offsite to local water ways. Regularly inspect your irrigation system to prevent excessive runoff.
- **Trash and Debris** dumped or left to accumulate on residential or business grounds can wind up local waterways. Dispose of trash properly. Keep areas clean and free of trash and debris.
- **Natural things** such as soil, leaves, grass clippings, and pet waste can cause water pollution.
- **Waste dumped into storm sewers** goes into creeks and waterways without treatment.
- **Automobiles and other vehicles** cause water pollution as well as air pollution

Everyone can make a difference!

Reporting of Illegal Dumping or Suspicious Discharges:



Reporting will, in great part, rely on participation from the public.

Residents who observe illegal dumping or observe pollutants within waterways or storm sewers should contact the City of Salinas, Environmental & Maintenance Services Office.

Dial (831) 758-7233,
Monday – Thursday
8 a.m. - 5:00 p.m.

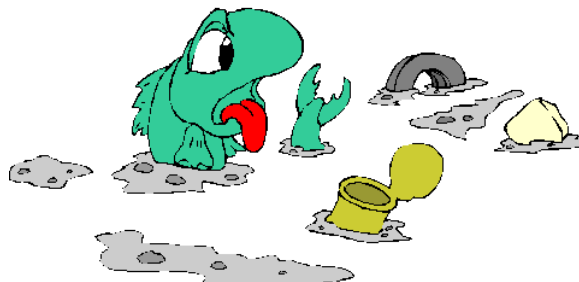


Or call **911** after hours, weekends or holidays to report a stormwater violation.

For non-emergencies use the internet inquiry form located on the City's website address below.

<http://www.ci.salinas.ca.us/contact.cfm>

This program will succeed with strong public participation.



CITY OF SALINAS

Illicit Discharge Detection & Elimination



STORMWATER POLLUTION PREVENTION

Report Illicit Discharges and Illegal Dumping

Phone: **831-758-7233**

or

Dial **911**

For Emergency Reporting

City of Salinas - Public Works Department
Environmental & Maintenance Services
426 Work Street, Salinas, Ca. 93901

Non-Emergency Web Contact::

<http://www.ci.salinas.ca.us/contact.cfm>

What is an Illicit Discharge?

An illicit discharge is defined as “any discharge into a municipal storm sewer system that is not composed entirely of stormwater”. Some of the pollutants that fall into this broad category are:

- Car wash wastewater
- Gas and motor oil
- Grass clippings
- Household cleansers
- Paints
- Pesticides
- Pet waste
- Solvents
- Weed killer



Sometimes these pollutants are carried through the storm drainage system by rain, wind, or improper disposal into Salinas Waterways. This can result in serious health and water quality problems. In addition, wildlife and the overall appearance of the creek or waterway is adversely affected by illicit discharges.

Six Easy Ways That You Can Keep Illicit Discharges Out of Our Local Creeks

There are simple steps that we can take to solve the problems that our local waterways face. It is up to YOU, the homeowner and business owners who call Salinas home, to clean it up and to help keep it clean!



1. **Used oil, antifreeze, and batteries** can be recycled. Clean up any spills immediately—kitty litter or sawdust will absorb the spill. Be sure to sweep these up as well.



2. Wash your car on the grass so that **water, detergent, and dirt** will be filtered by the soil. Better yet, take your car to a commercial car wash, where the dirty water is sent to the wastewater treatment plant.

3. Empty bottles of **household cleansers, pesticides, and weed killer** should be disposed of according to label directions.



4. **Grass clippings** in the street should be swept up after each mowing. Grass clippings left in the street are being washed down into the storm sewers and end up in the local waterways where they have the potential to cause algae blooms.



5. Many household products, including **paints, paint thinners, and solvents** can be taken free of charge to Salinas Valley Solid Waste Authority, Household Hazardous Waste drop-off site at 128 Sun St. Salinas, CA 93901, (831) 775-3000. Paint brushes used with water based paint can be rinsed in the sink. If you have a small amount of left-over paint in a can, stuff it loosely with newspaper, dry out completely and put it in the trash.



6. When walking your pet use a bag or use a scooper to clean up your **pet's waste**. In order to keep animal waste from contaminating our community, anyone who walks a pet should properly dispose of waste by picking it up, wrapping it, and either placing it into the trash or flushing it UNWRAPPED!